

# CONSTRUCTION OF THE HOOVER DAM BYPASS BRIDGE

**THIS IS THE LAST  
UPDATE:** 05 August 2010

[www.maximumreach.com](http://www.maximumreach.com)

---

**1,600 FT. SOUTH OF THE DAM  
900 FT. ABOVE WATER  
2000 FT. LONG**

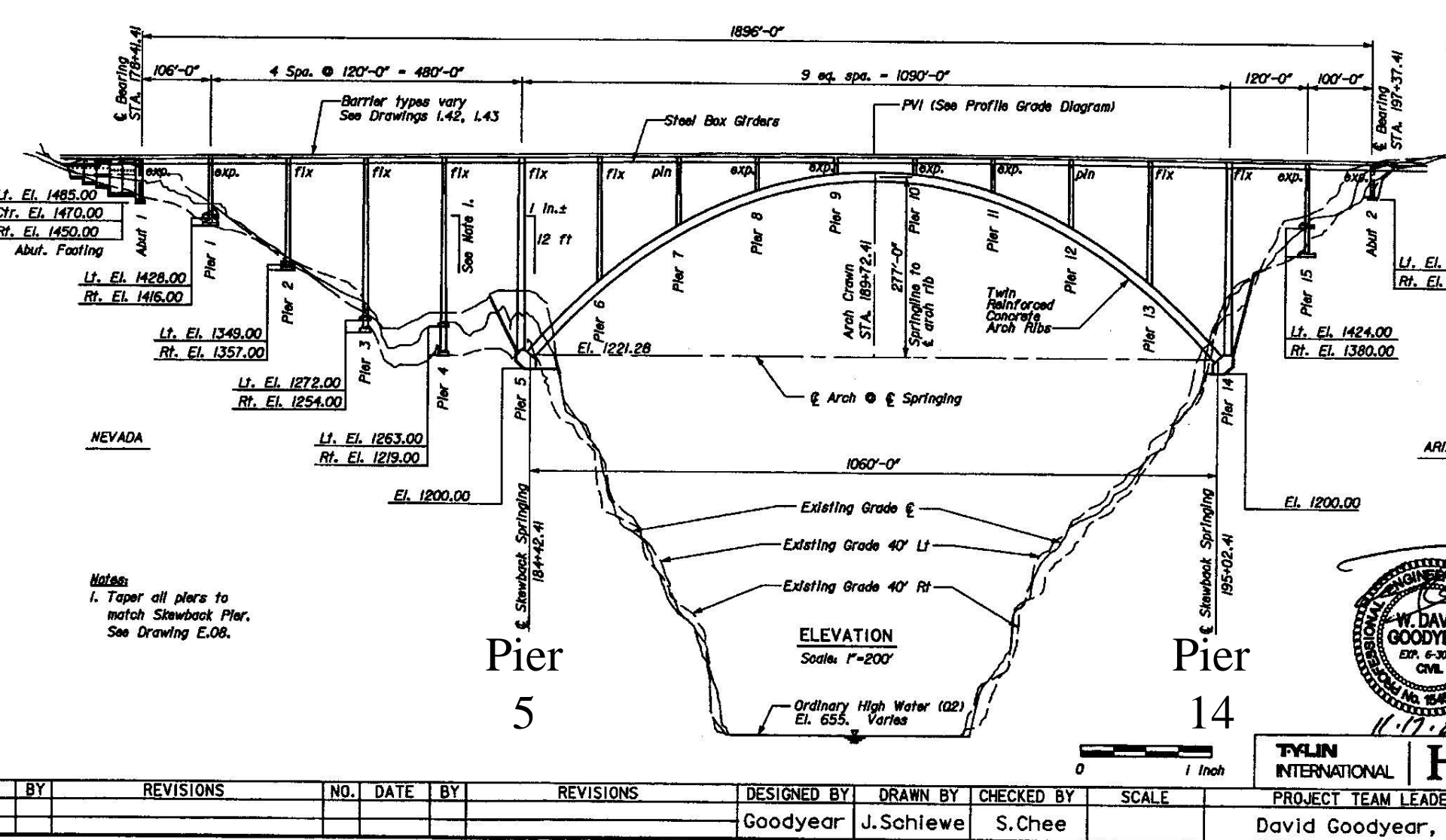
**COMPLETION DATE: September 2010  
OPEN TO TRAFFIC: November 2010**

**Artists conception of  
the bypass bridge in  
the foreground**

**Pier  
5**

**Pier  
14**



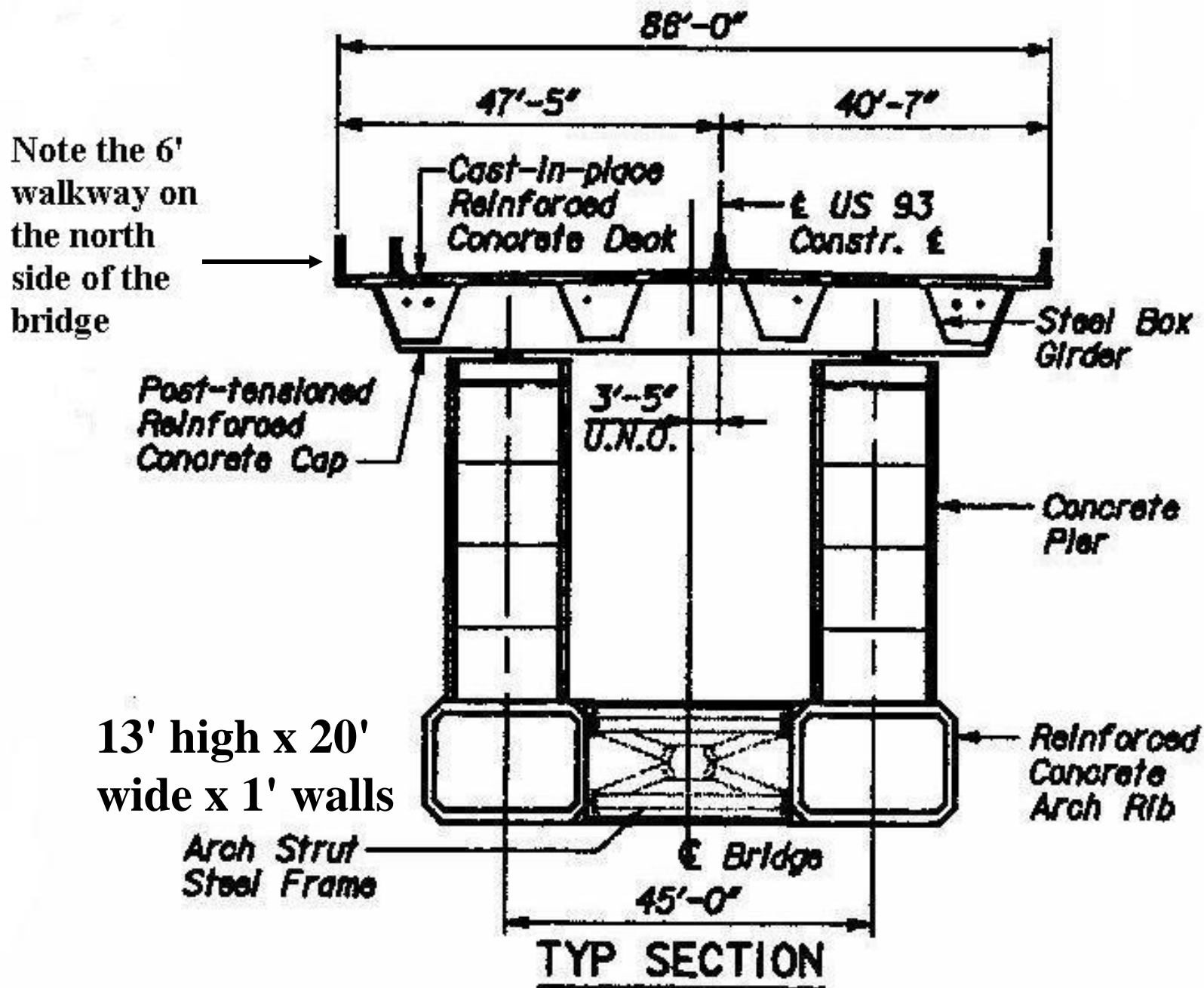


# BRIDGE DETAILS

LOOKING NORTH



# US 93 SUPERELEVATION DIAGRAM



**The construction of the bridge is completed. Only some clean up remains which should be complete by 1 Sept.**

**Both cableways have been dismantled.**

**Note on slide number 12 the hand rail for the side walk that runs on the north side of the bridge. It looks like the vertical posts and the horizontal rail might be made out of pipe. It doesn't appear that curved guard screen has been install on the horizontal rail. Hopefully, it will not be installed to block the view.**

**It looks like the bridge won't be open to traffic until around 1 November 2010 after all the roadway is paved, ie, in the areas under the towers for the cableways, etc.**

**This will be the last update on the progress of the bridge.**

**Looking southwest at the bypass bridge**















PEDESTRIANS  
BEYOND  
THIS POINT





























**FINÉ**

